



# BAND SAW MILLING & DRILLING



## BAND SAW Series



### CUTTING CAPACITY

| X° mm | ○                       | □  | □  |
|-------|-------------------------|--|--|
| 0°    | 225 (8 <sup>3/4</sup> ) | 240 x 160 (9 <sup>3/8</sup> x 6 <sup>1/4</sup> ) | 200 x 200 (7 <sup>7/8</sup> x 7 <sup>7/8</sup> ) |
| -45°  | 160 (6 <sup>1/4</sup> ) | 155 x 115 (6 <sup>1/8</sup> x 4 <sup>1/2</sup> ) | 140 x 140 (5 <sup>1/2</sup> x 5 <sup>1/2</sup> ) |
| -60°  | 90 (3 <sup>1/2</sup> )  | 90 x 100 (3 <sup>1/2</sup> x 3 <sup>7/8</sup> )  | 90 x 90 (3 <sup>1/2</sup> x 3 <sup>1/2</sup> )   |



## RF-270S

Geared Drive / One Way Swivel

| Item                                    | Unit             | RF-270S                |               |
|---|------------------|------------------------|---------------|
| Horse Power                             | HP               | 1.5 (1-Phase)          | 1.5 (3-Phase) |
| Feedrate                                | Mt/min           | 60HZ / 106             | 60HZ / 42-84  |
|   | Ft/min           | 50HZ / 88              | 50HZ / 35-70  |
| Saw                                     | mm (W x T x L)   | 27 x 0.9 x 2450        |               |
|   | inch (W x T x L) | 1.06 x 0.035 x 96.46   |               |
| Machine Dimensions                      | mm (L x W x H)   | 1420 x 510 x 1380      |               |
|   | inch (L x W x H) | 56 x 20 x 54.3         |               |
| Weight                                  | NW/GW            | 205 / 225 kgs          |               |
|   |                  | 452 / 496 lbs          |               |
| Packing Dimensions                      | mm (L x W x H)   | 1300 x 640 x 950       |               |
|   | inch (L x W x H) | (SKD 1283 x 737 x 673) |               |
| No. of Machines Packed in 20" container | 20'              | 26 sets / SKD38 sets   |               |

## RF-300 (Semi Auto Saw Bow Lifting & Hydraulic Vise)

Variable Speed (Optional)

| Item                                    | Unit             | RF-300A                    |
|---|------------------|----------------------------|
| Main Motor                              | HP               | 3 (2.2kw)(3-Phase)         |
| Speed                                   | Mt/min           | 60HZ / 26, 48, 69, 100 mpm |
|   | Ft/min           | 50HZ / 22, 40, 58, 84 mpm  |
| Saw Blade                               | mm (W x T x L)   | 34 x 1.1 x 3950            |
|   | inch (W x T x L) | 1-3/8" x 0.043 x 155.5     |
| Machine Dimensions                      | mm (L x W x H)   | 2100 x 1100 x 1400         |
|   | inch (L x W x H) | 83 x 31 x 50               |
| Weight                                  | NW/GW            | 740 / 800 kgs              |
|   |                  | 1630 / 1760 lbs            |
| Packing Dimensions                      | mm (L x W x H)   | 1940 x 1140 x 1530         |
|   | inch (L x W x H) | 76.4 x 44.8 x 60.2         |
| No. of Machines Packed in 20" container | 20'              | 6 sets                     |
|   | 40'              | 12 sets                    |

### CUTTING CAPACITY

| X° mm | ○           | □                         | □                         |
|-------|-------------|---------------------------|---------------------------|
| 0°    | 300 (11.8") | 300 x 500 (11.8" x 19.6") | 300 x 300 (11.8" x 11.8") |



## RF-500DSAH (Auto Swivel)

2 Way Swivel, Variable Speed  
Semi Auto Bow Lifting & Hydraulic Vise

| Item                                    | Unit             | RF-500DSA   |
|---|------------------|---|
| Main Motor                              | HP               | Main Motor / 5HP<br>Hydraulic Motor / 2HP<br>Coolant Pump / 1/8HP |
|   |                  |   |
| Speed                                   | Mt/min           | 60HZ / 32-96  |
|   | Ft/min           | 50HZ / 26-80  |
| Saw Blade                               | mm (W x T x L)   | 41 x 1.3 x 5890   |
|   | inch (W x T x L) | 1.61" x 0.05" x 231.88"   |
| Machine Dimensions                      | mm (L x W x H)   | 3000 x 1270 x 1730  |
|   | inch (L x W x H) | 118" x 50" x 68"  |
| Weight                                  | NW/GW            | 1590 / 1800 kgs   |
|   |                  | 3505 / 3968 lbs   |
| Packing Dimensions                      | mm (L x W x H)   | 2930 x 1140 x 1981  |
|   | inch (L x W x H) | 115.3" x 44.8" x 78"  |
| No. of Machines Packed in 20" container | 20'              | 4 sets/SKD  |
|   | 40'              | -   |

### CUTTING CAPACITY

| X° mm | ○         | □  | □                     |
|-------|-----------|--|-----------------------|
| 0°    | 508 (20") | 660 x 508 (26" x 20")                                | 508 x 508 (20" x 20") |
| ±45°  | 508 (20") | 590 x 260 (23 <sup>1/4</sup> " x 10 <sup>1/4</sup> " | 508 x 508 (20" x 20") |
| ±60°  | 380 (15") | 460 x 360 (18" x 14")                                | 380 x 380 (15" x 15") |





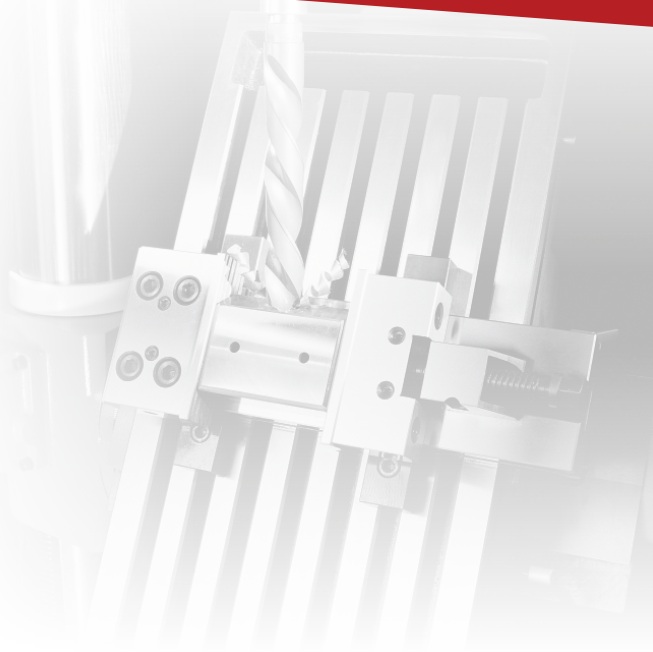
## Milling & Drilling Series



### RF-205S

22" Drilling Machine  
S = Square Table

| Item                                    | Unit                     | RF-205S                        |
|---|--------------------------|--------------------------------|
| Main Motor                              | HP                       | 1.5 (3-Phase)                  |
| Speed                                   | 2 Speed Motor (standard) | rpm 60Hz 90~3580 50Hz 75~3140  |
| Drilling Capacity                       | mm                       | 32                             |
| Taper                                   |                          | MT3                            |
| Stroke                                  | mm                       | 150                            |
| Depth                                   | mm                       | 284                            |
| Table Size                              | mm                       | 505 x 405                      |
| Column Diameter                         | mm                       | Ø100                           |
| Spindle Nose To Table                   | mm                       | 915                            |
| Spindle Nose To Base                    | mm                       | 1262                           |
| Quill Diameter                          | mm                       | Ø62                            |
| No. of Power Down feed                  | mm                       | -                              |
| No. of T Slot                           |                          | 2                              |
| T Slot Size                             | mm                       | 16 x 26                        |
| Packing Dimensions                      | mm (L x W x H)           | 855 x 570 x 920                |
| Machine Weight                          | NW/GW                    | 220 / 230 kgs<br>440 / 505 lbs |
| No. of Machines Packed in 20" container | 20'                      | 24 sets                        |



#### WORKING CAPACITY

|                |           |               |
|----------------|-----------|---------------|
| In Mild Steel  | Drilling  | 32mm (1 1/4") |
|                | Face Mill | 76mm (3")     |
|                | End Mill  | 20mm (3/4")   |
| (Optional)     | Tapping   | 16mm (5/8")   |
| In Light Alloy |           | 32mm (1 1/4") |



RF-31

Stand is optional

### RF-31

Spindle Power Down Feed 0.12 - 0.18 - 0.25mm per / rev.

| Item                                    | Unit                     | RF-31  |
|---|--------------------------|--|
| Main Motor                              | HP                       | 1.5  |
| Speed                                   | 1 Speed Motor (standard) | rpm 60Hz / 150-3000<br>50Hz / 125-2500 (12 speeds) |
|   | 2 Speed Motor (optional) | rpm 60Hz / 75-3000<br>50Hz / 62-2500 (23 speeds)   |
| Taper                                   |                          | MT3 or R8  |
| Stroke                                  | mm                       | 130  |
| Depth                                   | mm                       | 205  |
| Table Size                              | mm                       | 730 x 210  |
| X Travel                                | mm                       | 460  |
| Y Travel                                | mm                       | 190  |
| Column Diameter                         | mm                       | Ø115   |
| No. of T Slot                           |                          | 4  |
| T Slot Size                             | mm                       | 16 x 26  |
| Packing Dimensions                      | mm (L x W x H)           | 810 x 740 x 1150 (w/o stand)                       |
| Machine Weight                          | NW/GW                    | 230 / 255 kgs<br>505 / 560 lbs                     |
| No. of Machines Packed in 20" container | 20'                      | 42 sets (w / o stand)                              |



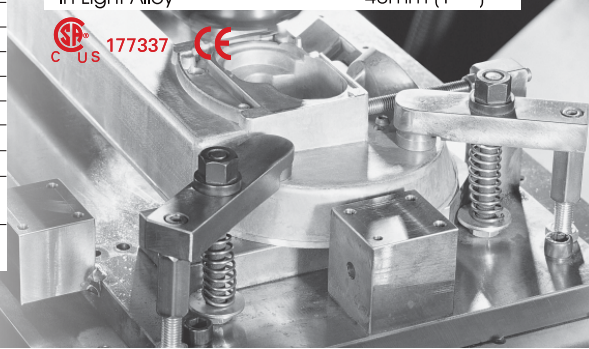
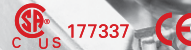
### RF-45VN2F+DRO (3 axis)

Variable Speed  
Table Power Feed (Optional)  
0.12 - 0.18 - 0.25 mm per / rev.

| Item                                    | Unit           | RF-45VN2F+DRO   |
|---|----------------|---|
| Main Motor                              | HP             | Motor 1.5HP (3-Phase)<br>PRW 110V or 220V(1-Phase only) |
| Speed                                   | rpm            | 0~2500  |
| Taper                                   |                | MT3 or R8 (Optional MT4)                                |
| Stroke                                  | mm             | 107   |
| Depth                                   | mm             | 255   |
| Table Size                              | mm             | 820 x 240   |
| X Travel                                | mm             | 520   |
| Y Travel                                | mm             | 210   |
| Column Diameter                         | mm             | -   |
| No. of T Slot                           |                | 4   |
| T Slot Size                             | mm             | 16 x 26   |
| Coolant Pump                            |                | -   |
| Packing Dimensions                      | mm (L x W x H) | 915 x 737 x 1194  |
| Machine Weight                          | NW/GW          | 330 / 360 kgs<br>725 / 795 lbs                          |
| No. of Machines Packed in 20" container | 20'            | 18 sets (w/o stand)                                     |

#### WORKING CAPACITY

|                |           |               |
|----------------|-----------|---------------|
| In Mild Steel  | Drilling  | 40mm (1 1/2") |
|                | Face Mill | 100mm (4")    |
|                | End Mill  | 20mm (3/4")   |
| (Optional)     | Tapping   | 20mm (3/4")   |
| In Light Alloy |           | 40mm (1 1/2") |





### **Rong Fu Industrial Company Ltd.**

- No. 132 Yi Chang East Road, Taiping District, Taichung, Taiwan
- [www.rongfu.com](http://www.rongfu.com)

Distributed by

**UNIQUE**  
SAWS & MACHINERY

### **Unique Saws & Machinery P. Ltd.** (An ISO 9001:2015 Company)

- 30 R.R. Private Industrial Area, Near Lav Kush Square, Sanwer Road, Indore - 452015 (M.P.) India
- +91 97555 99686
- [info@uniquesaws.com](mailto:info@uniquesaws.com)
- [www.uniquesaws.com](http://www.uniquesaws.com)